



**CHARIOT ANNOUNCES RESULTS FROM LA APRECIADA PROSPECT  
MINERALIZED TREND IS 2 KM LONG WITH TWO ZONES  
GRAB SAMPLES UP TO 4.50% Cu FROM SEVERAL LOCATIONS  
CHANNEL SAMPLES OF 1.14% Cu ACROSS SEVERAL METRES**

Toronto, January 22, 2007. – Chariot Resources Limited (“Chariot”) (TSX:CHD) is pleased to provide an update on the regional exploration program and announces results from a preliminary surface sampling program at the La Apreciada prospect. The La Apreciada prospect is located approximately 15 km from the Mina Justa project. The start of the regional exploration program was announced on August 23, 2006.

**La Apreciada:**

At La Apreciada copper mineralization has been sampled along a trend that is approximately 2 km long and 100 to 150 metres wide. To date two major zones have been identified. A preliminary geological map has been completed and 395 samples have been collected from the La Apreciada prospect. The samples come from two zones: The Southern Zone which is approximately 200 metres long and 100 metres wide; and the Northern Zone which is about 500 to 600 metres long and up to 150 metres wide.

The Southern Zone is characterized by a granodiorite intrusive into andesites and conglomerates. There are over 26 trenches in the Southern Zone. Grab samples and samples from trenches have returned grades of up to 4.50% Cu. One area is characterized by grab samples of around 2.0% Cu.

The Northern Zone is characterized by faults, veins and a prominent discordant structure in predominantly andesitic rocks. In the northern section of this zone grab samples have returned grades of up to 4.51% Cu from local fracture zones. In the southern section of this zone grab samples have returned up to 3.19% Cu. A channel sample across the major discordant structure in the southern section has returned 1.14% Cu over several metres.

**Regional Exploration Program:**

As previously reported, Marcobre SAC has initiated a regional exploration program on lands surrounding the Mina Justa project. The Marcona Copper Property covers approximately 32,899 hectares. The Mina Justa project, which is the focus of a feasibility study, is located on the “Target Area 1” property which covers approximately 3,969 hectares. The “Rio Tinto

Claims” which consist of 44 contiguous claims around Target Area 1 cover approximately 28,930 hectares.

Four copper prospects have, to date, been identified on lands surrounding the Mina Justa project. These are:

- Achupallas prospect, located on Target Area 1, about 6 km north of Mina Justa
- Miramar prospect, located on the Rio Tinto Claims about 18 km northwest of Mina Justa
- Clavelinas prospect, located on the Rio Tinto Claims about 5 km east from Mina Justa, and
- La Apreciada prospect, located on the Rio Tinto Claims about 15 km east of Mina Justa.

The initial regional exploration program will consist of geological mapping, surface sampling, geophysical surveys and trenching in order to better define these prospects and to develop additional drill targets.

All samples are analyzed for copper (Cu) using sequential leach resulting in four Cu analyses per sample (Cu total, Cu soluble in sulphuric acid, Cu soluble in sodium cyanide and a Cu residual). Quality control procedures include insertion of certified project standards at the drill site (1 in 30), field duplicate samples (1 in 30 each), laboratory duplicates (1 in 30) and reagent blanks and reference material (1 in 30 each).

Data contained in this news release was validated and intersections calculated by John D. Kapusta, P. Geo, Vice-President Exploration and Geological Services, Chariot Resources Limited, the designated Qualified Person as defined in National Instrument 43-101.

“The preliminary results from La Apreciada are very encouraging” said Ulli Rath, President and CEO of Chariot. He went on to say that “Our regional exploration program is continuing. We have budgeted 5,000 metres of drilling for this program”.

**Chariot Resources Limited (TSX:CHD)** is developing its 70% owned Marcona Copper Property in Peru. With exceptional infrastructure, a significant resource and strong financial and commercial partners, the Mina Justa project is scheduled to be a mid-tier copper producer by 2009.

Additional details about Chariot can be viewed at the Company's website, [www.chariotresources.com](http://www.chariotresources.com).

**CHARIOT RESOURCES LIMITED.**

**Ulrich (Ulli) Rath**  
**President & CEO**

**Toronto, Canada Office:**

**Ulli Rath – President & CEO:**

Office: +1 – 416 – 363 4554

Cell phone: +1 – 416 – 270 4481

**Forbes West – Investor Relations**

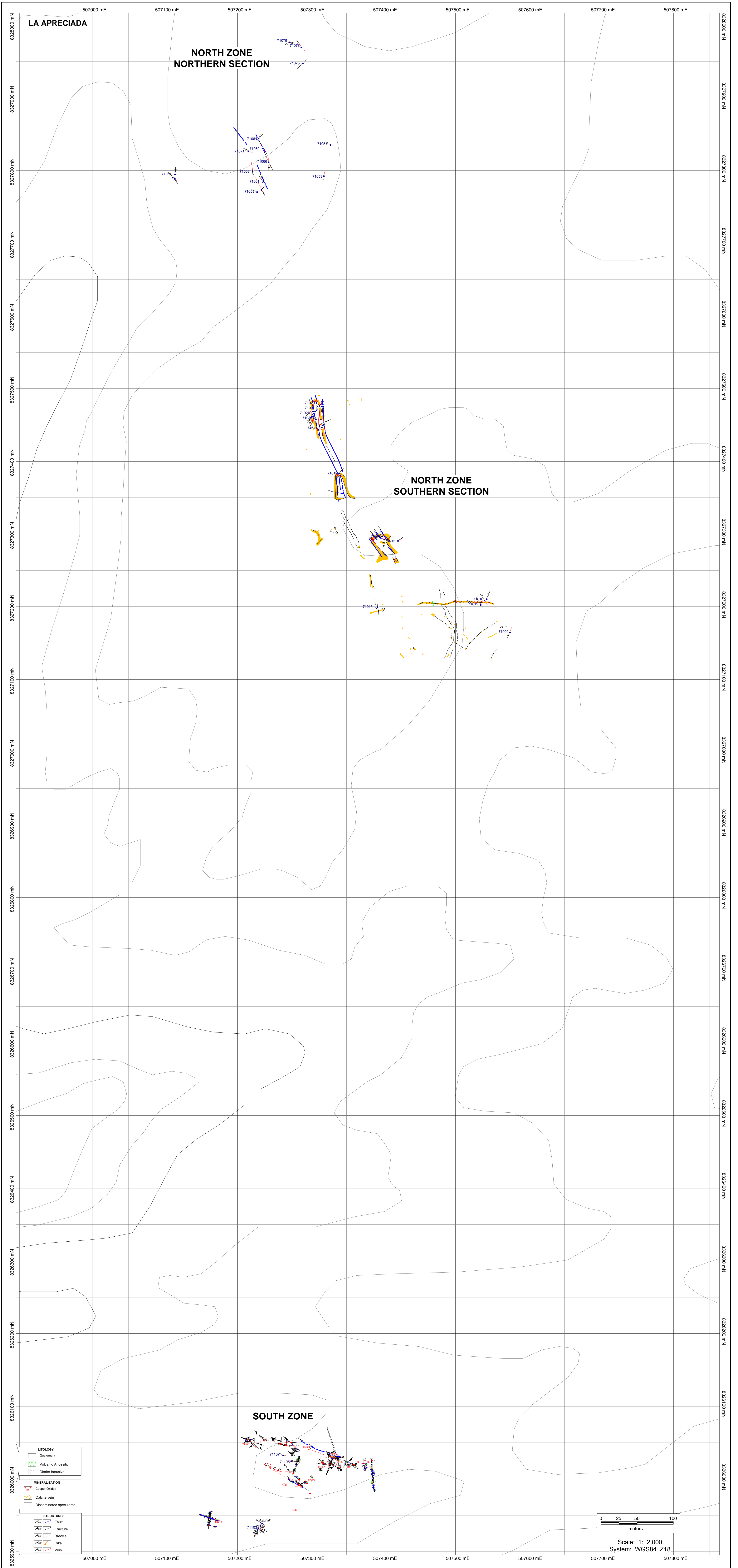
Office: +1 – 416 – 203 2200

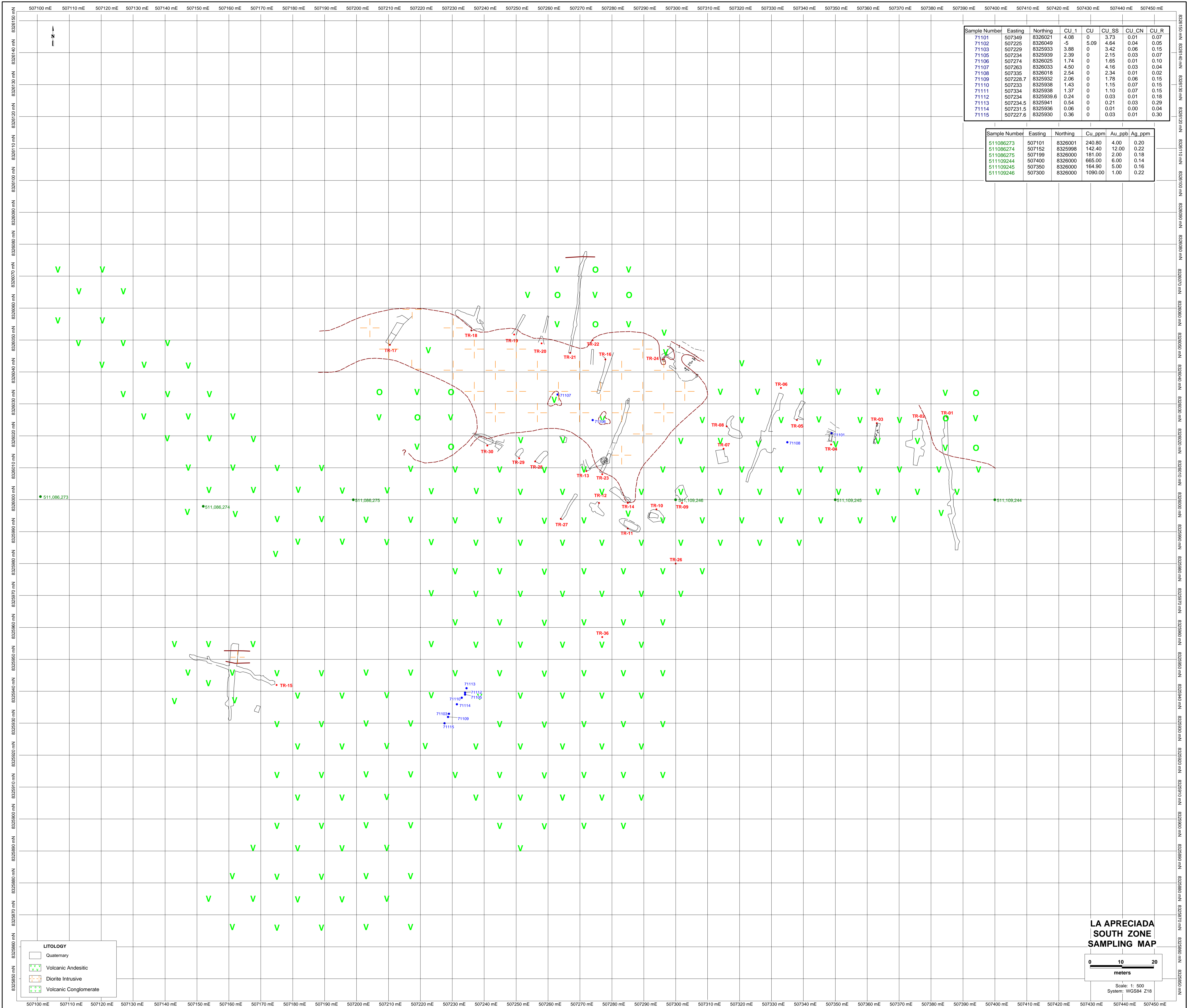
Toll Free: +1 – 888 – 655 5532

**Lima, Peru Office**

**John Kapusta – VP Exploration & Geological Services:**

Office: +51 – 1 – 617 1313





Sample Number	Easting	Northing	CU 1	CU	CU SS	CU CN	CU_R
71101	507349	8326021	4.08	0	3.73	0.01	0.07
71102	507225	8326049	-5	5.09	4.64	0.04	0.05
71103	507229	8325933	3.88	0	3.42	0.06	0.15
71105	507234	8325939	2.39	0	2.15	0.03	0.07
71106	507274	8326025	1.74	0	1.65	0.01	0.10
71107	507263	8326033	4.50	0	4.16	0.03	0.04
71108	507335	8326018	2.54	0	2.34	0.01	0.02
71109	507228.7	8325932	2.06	0	1.78	0.06	0.15
71110	507233	8325938	1.43	0	1.15	0.07	0.15
71111	507334	8325938	1.37	0	1.10	0.07	0.15
71112	507234	8325939.6	0.24	0	0.03	0.01	0.18
71113	507234.5	8325941	0.54	0	0.21	0.03	0.29
71114	507231.5	8325936	0.06	0	0.01	0.00	0.04
71115	507227.6	8325930	0.36	0	0.03	0.01	0.30

Sample Number	Easting	Northing	Cu_ppm	Au_ppb	Ag_ppm
511086273	507101	8326001	240.80	4.00	0.20
511086274	507152	8325998	142.40	12.00	0.22
511086275	507199	8326000	181.00	2.00	0.18
511109244	507400	8326000	665.00	6.00	0.14
511109245	507350	8326000	164.90	5.00	0.16
511109246	507300	8326000	1080.00	1.00	0.22

**LITOLOGY**

- Quaternary
- Volcanic Andesitic
- Diorite Intrusive
- Volcanic Conglomerate

**LA APRECIADA  
SOUTH ZONE  
SAMPLING MAP**

0 10 20  
meters

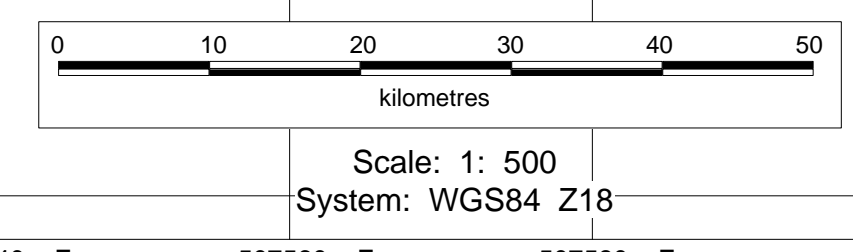
Scale: 1: 500  
System: WGS84 Z18



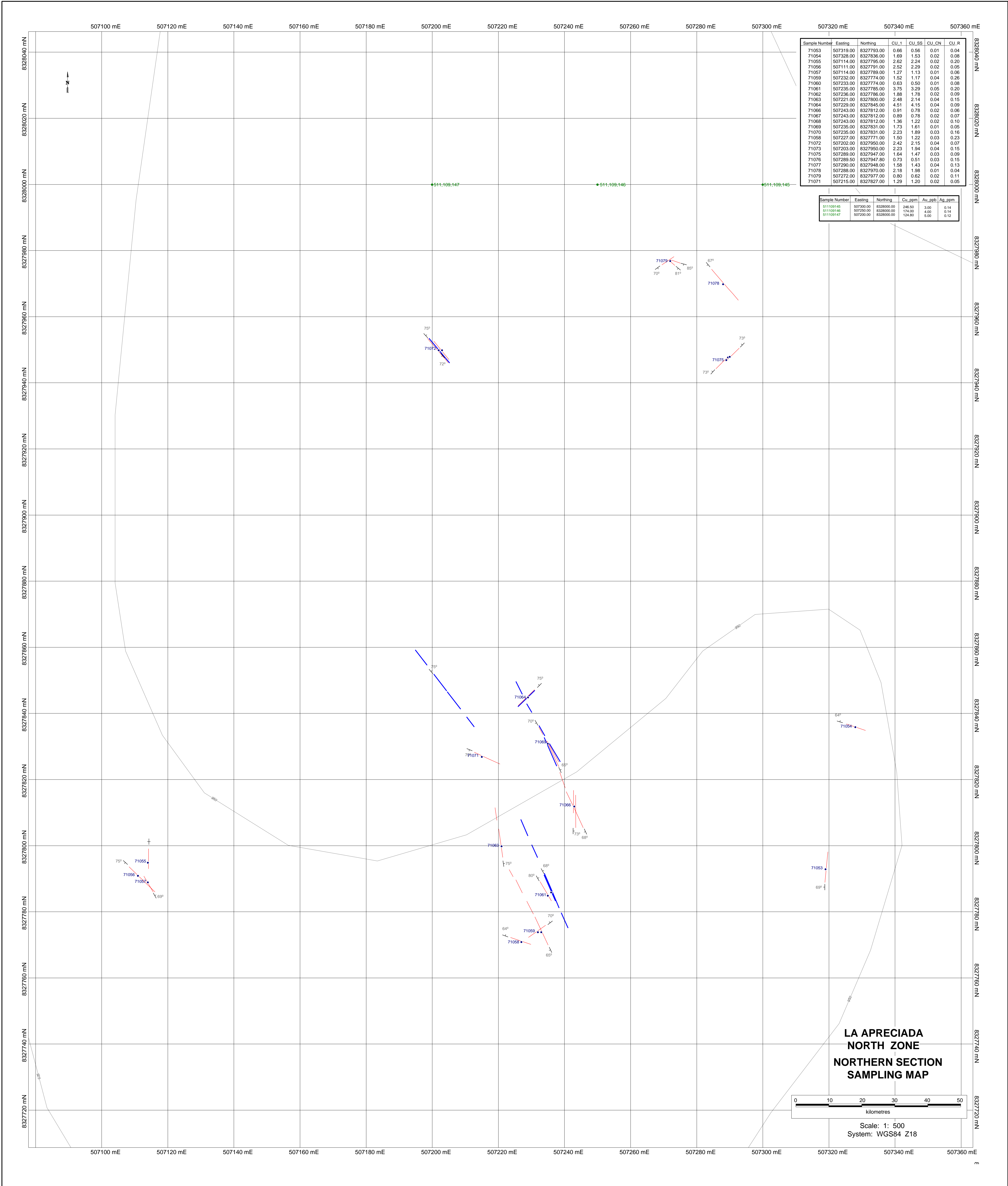
Sample Number	Easting	Northing	CU_1	CU_SS	CU_CN	CU_R
71002	507311.00	8327476.00	0.27	0.15	0.01	0.09
71003	507312.40	8327476.00	0.68	0.54	0.02	0.12
71004	507312.70	8327476.00	0.13	0.03	0.01	0.08
71006	507314.05	8327476.00	0.68	0.43	0.03	0.19
71007	507316.00	8327476.00	0.56	0.41	0.02	0.14
71008	507318.00	8327476.00	0.05	0.00	0.00	0.04
71001	507310.00	8327475.00	0.50	0.37	0.02	0.08
71010	507543.00	8327211.00	0.79	0.66	0.03	0.09
71011	507540.00	8327209.00	1.33	1.29	0.01	0.06
71012	507535.00	8327203.00	1.26	0.88	0.09	0.27
71013	507421.00	8327291.00	1.73	1.73	0.02	0.04
71015	507391.00	8327200.00	0.92	0.82	0.02	0.08
71016	507393.00	8327200.00	1.09	0.93	0.03	0.12
71017	507399.00	8327297.00	1.94	1.70	0.06	0.24
71018	507402.00	8327293.00	3.19	2.81	0.05	0.12
71019	507400.00	8327384.00	0.72	0.50	0.03	0.15
71009	507575.00	8327165.00	1.92	1.79	0.04	0.08
71022	507313.00	8327477.00	1.79	1.61	0.05	0.14
71023	507313.00	8327477.00	1.36	1.12	0.03	0.24
71024	507317.00	8327474.00	0.06	0.02	0.00	0.04
71025	507318.00	8327474.00	0.83	0.71	0.02	0.07
71026	507318.50	8327474.00	0.09	0.01	0.00	0.07
71027	507303.00	8327469.00	0.07	0.01	0.00	0.06
71028	507303.00	8327468.00	0.56	0.34	0.02	0.19
71029	507303.00	8327469.00	0.15	0.02	0.00	0.12
71030	507303.00	8327469.00	0.14	0.02	0.00	0.11
71031	507304.00	8327469.00	1.13	0.69	0.03	0.35
71032	507305.00	8327469.00	1.36	1.10	0.05	0.21
71033	507307.00	8327469.00	0.96	0.67	0.04	0.18
71034	507304.00	8327463.00	0.49	0.20	0.02	0.24
71036	507304.00	8327462.70	0.77	0.10	0.02	0.60
71040	507308.00	8327458.00	0.43	0.15	0.01	0.24
71020	507309.00	8327481.00	0.85	0.69	0.02	0.10
71042	507313.00	8327446.00	0.65	0.53	0.01	0.07
71043	507314.00	8327447.00	1.38	0.99	0.02	0.31
71045	507315.00	8327448.00	1.14	0.94	0.02	0.12
71046	507317.00	8327450.00	1.40	1.16	0.03	0.18
71047	507319.00	8327451.00	0.14	0.03	0.00	0.10
71048	507313.00	8327449.00	1.77	1.41	0.03	0.32
71049	507316.00	8327447.00	1.17	0.94	0.01	0.16
71050	507316.00	8327447.00	1.81	1.65	0.02	0.22
71052	507315.00	8327448.00	0.94	0.61	0.04	0.12
71041	507312.00	8327444.00	0.02	0.00	0.00	0.02

Sample Number	Easting	Northing	Cu_ppm	Au_ppb	Ag_ppm
511109191.00	507550.00	8327200.00	1040.00	1.00	0.14
511110752.00	507253.00	8327202.00	109.50	1.00	0.16
511110757.00	507500.00	8327202.00	1875.00	2.00	0.08

**LA APRECIADA  
NORTH ZONE  
SOUTHERN SECTION  
GEOLOGY**



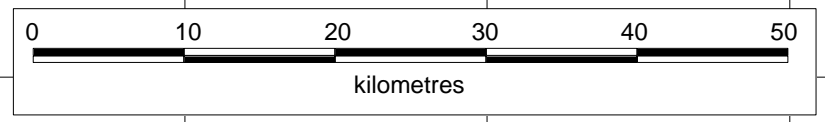
- MINERALIZATION**
  - Copper Oxides
  - Calcite vein
  - Disseminated specularite
- ALTERATION**
  - Gypsum
  - Calcite
  - Argillization
  - Sulfidation
  - Propylitization
- STRUCTURES**
  - Fault
  - Fracture
  - Breccia
  - Dike
  - Vein



Sample Number	Easting	Northing	CU_1	CU_SS	CU_CN	CU_R
71053	507319.00	8327793.00	0.66	0.56	0.01	0.04
71054	507328.00	8327836.00	1.69	1.53	0.02	0.08
71055	507114.00	8327795.00	2.62	2.24	0.02	0.20
71056	507111.00	8327791.00	2.52	2.29	0.02	0.05
71057	507114.00	8327789.00	1.27	1.13	0.01	0.06
71058	507232.00	8327774.00	1.52	1.17	0.04	0.26
71060	507233.00	8327774.00	0.63	0.50	0.01	0.08
71061	507235.00	8327785.00	3.75	3.29	0.05	0.20
71062	507236.00	8327786.00	1.88	1.78	0.02	0.09
71063	507221.00	8327800.00	2.48	2.14	0.04	0.15
71064	507229.00	8327845.00	4.51	4.15	0.04	0.09
71066	507243.00	8327812.00	0.91	0.78	0.02	0.06
71067	507243.00	8327812.00	0.89	0.78	0.02	0.07
71068	507243.00	8327812.00	1.36	1.22	0.02	0.10
71069	507235.00	8327831.00	1.73	1.61	0.01	0.05
71070	507235.00	8327831.00	2.23	1.89	0.03	0.16
71068	507227.00	8327771.00	1.50	1.22	0.03	0.23
71072	507202.00	8327950.00	2.42	2.15	0.04	0.07
71073	507203.00	8327950.00	2.23	1.94	0.04	0.15
71075	507289.00	8327947.00	1.64	1.47	0.03	0.09
71076	507289.00	8327947.00	0.73	0.51	0.03	0.15
71077	507290.00	8327948.00	1.58	1.43	0.04	0.13
71078	507288.00	8327970.00	2.18	1.98	0.01	0.04
71079	507272.00	8327977.00	0.80	0.62	0.02	0.11
71071	507215.00	8327827.00	1.29	1.20	0.02	0.05

Sample Number	Easting	Northing	Cu_ppm	Au_ppb	Ag_ppm
511109145	507300.00	8328000.00	246.50	3.00	0.14
511109146	507250.00	8328000.00	174.00	4.00	0.14
511109147	507200.00	8328000.00	128.80	5.00	0.12

**LA APRECIADA  
NORTH ZONE  
NORTHERN SECTION  
SAMPLING MAP**



Scale: 1: 500  
System: WGS84 Z18